



GUARDIAN DESIGNS

Thank you for purchasing this premier shift light technology from GuardianDesigns. This guide is intended to get you started in your quest towards consistency and beating the competition. There are many features included in the shift light and the companion App. The guide will point most of them out, but should you have any questions, you can contact us for help at:  
**[guardiandesigns.studio@gmail.com](mailto:guardiandesigns.studio@gmail.com)**

Below are QR codes to quickly direct you to the app stores.

**Google Play Store Link**



**Apple App Store Link**



**Please read and follow all instructions.** Failure to do so can void the warranty, cause damage to the device, damage your vehicle or other property, and/or result in personal injury.

This device is intended only for use in motor vehicles.

## **Safety and Precautions**

Disconnect your negative battery cable prior to beginning.

Double-check all connections prior to turning on power to the unit.

**CAUTION** - Wear safety glasses while installing the unit.

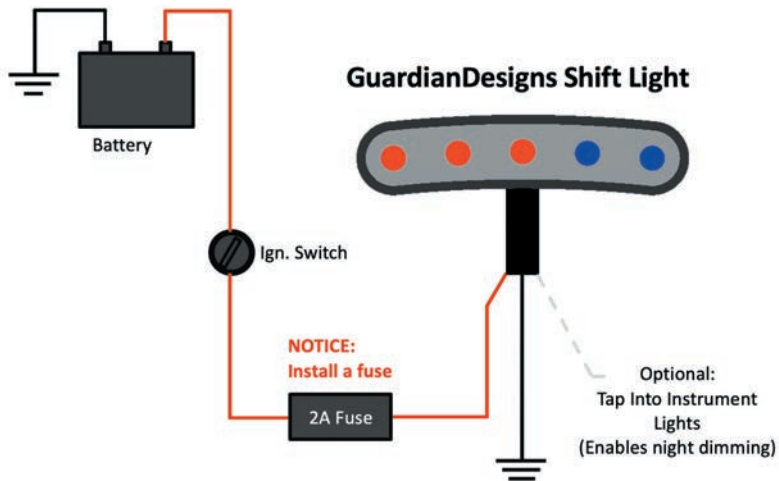
**NOTICE** - A 2A fuse is recommended on the connection to switched 12V source to prevent damage or fire in case of a short or malfunction – install close to power source.

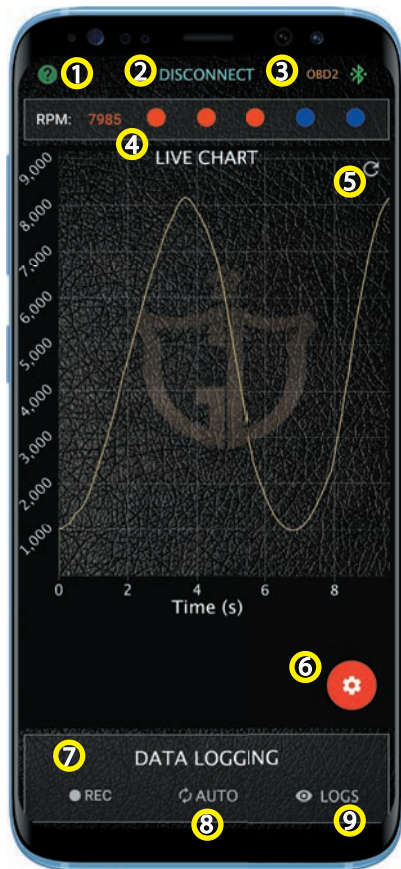
**WARNING** - Pay attention to driving, don't stare at the lights or use your mobile device while driving! The RPM can be logged by the app for later review while not driving.

**WARNING** - the LED's can be VERY bright especially at night, which can disrupt vision or cause distraction. Set the brightness low enough to avoid this especially at night or in dark conditions.

**WARNING** - If the unit malfunctions or causes any distraction, safely come to a stop and cover it or disconnect the power source. Remove the fuse to de-energize the power lead.

# WIRING DIAGRAM



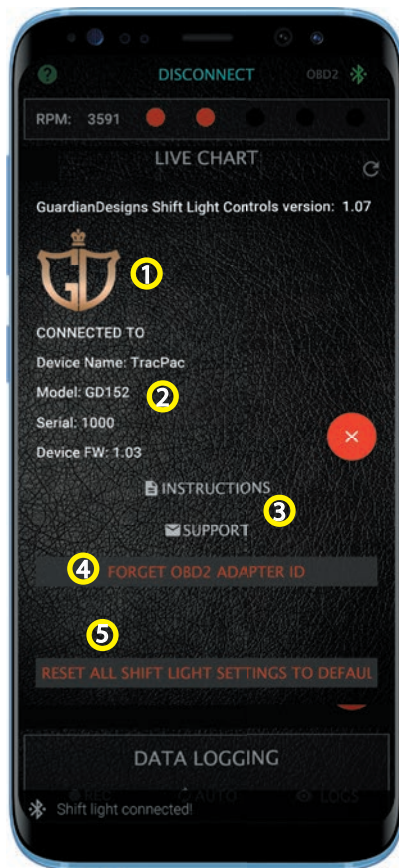


## MAIN SCREEN - PORTRAIT

- 1 Go to info page- links to instructions and last connected device information
- 2 Connect/Disconnect to shift light - disconnecting is not required
- 3 Connection indication - "OBD" will be present when connected to an OBD-II wireless module, which will happen automatically when module is present and has power
- 4 RPM and shift light level indicator
- 5 Reset Chart
- 6 Settings Controls
- 7 "REC" Starts/Stops logging, will pulse red when recording
- 8 Set to auto-start/stop logging at preset RPM (see Settings Control to set)
- 9 View logs captured to date

## INFO SCREEN

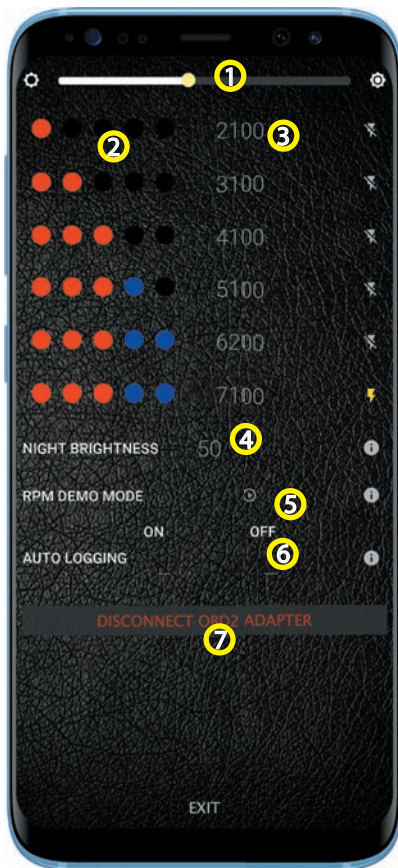
- 1 Click the company logo to connect to the website
- 2 Information about the last connected RPM indicator
- 3 Helpful links to instructions, or send an e-mail for support
- 4 If you need to connect to a different OBD2 adapter, press this while connected to the Pro Module and power cycle it (the Pro Module memorizes the adapter's ID and only connects to that ID in the future)
- 5 Reset all of the Pro Module's settings to default (on next power-up)





## SETTINGS SCREEN

- 1 Daytime brightness control
- 2 LED color indicators for each LED on each level - touch a colored circle to change the color for that LED and level
- 3 RPM levels - set the RPM to trigger levels 1-6. Set to zero to disable that level.
- 4 Night brightness level as a percentage of the daytime setting
- 5 Turn on or off LED flashing for each level
- 5 RPM demo mode simulates range full range of RPM to demonstrate animation of LED's
- 6 Set up auto-logging on/off RPM, must also enable it on main screen by selecting "AUTO". Automatically starts/stops logging at set RPM
- 7 Disconnect the Pro Module from the OBD2 adapter, to allow other apps to connect to the OBD2 adapter



## COLOR CONTROLS

After touching one of the colored circles, use the popup color configurator to set the color for that LED

Move the color sliders to select the desired color, the color bar above the sliders will show the color mixed from the R (red), G (green), B (blue) settings

Press ACCEPT to set the LED to the new color choice

Press CANCEL to abort changing the LED color





## LOG LISTING

As you record logs, this list will grow to show them.

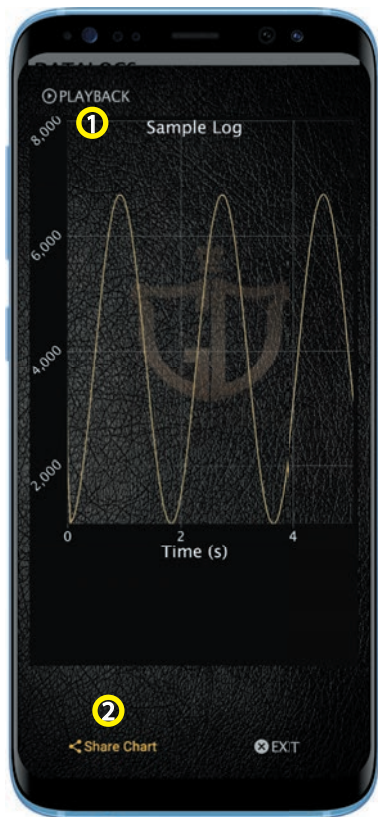
Click on the name (by default the date and time you started logging) to view the log.

Click on the arrow on the right edge of the log name's row to expand an option menu

- Pencil - rename the log
- Up arrow - change the current RPM level settings to match the settings when this log was recorded
- Envelope - e-mail the log in CSV format
- Trash can - delete this log, an undo option will appear along the bottom of the screen for 5 seconds, click it to restore the log or it will be permanently deleted



## LOG VIEWING



- 1 Press "PLAYBACK" to animate the charts real-time so you can get an understanding of your run
- 2 Share the chart by e-mail or Facebook, etc. Show your friends!

## **FCC Notice**

This equipment has been tested and found to comply with the limits for a class B digital device, pursuant to part 15 of the FCC Rules. These limits are designed to provide reasonable protection against harmful interference in a residential installation. This equipment generates, uses and can radiate radio frequency energy and if not installed and used in accordance with the instructions, may cause harmful interference to radio communications. However, there is no guarantee that interference will not occur in a particular installation. If this equipment does cause harmful interference to radio or television reception, which can be determined by turning the equipment off and on, the user is encouraged to try to correct the interference by one or more of the following measures:

- \* Reorient or relocate the receiving antenna.
- \* Increase the separation between the equipment and receiver.
- \* Connect the equipment into an outlet on a circuit different from that to which the receiver is connected.
- \* Consult the dealer or an experienced radio/TV technician for help.

In order to maintain compliance with FCC regulations, shielded cables must be used with this equipment. Operation with non-approved equipment or unshielded cables is likely to result in interference to radio and TV reception. The user is cautioned that changes and modifications made to the equipment without the approval of manufacturer could void the user's authority to operate this equipment.

**This device contains FCC ID: HSW2832**

**This device complies with Part 15 of the FCC Rules. Operation is subject to the following two conditions:**

- (1) This device may not cause harmful interference and**
- (2) This device must accept any interference received, including interference that may cause undesired operation.**

